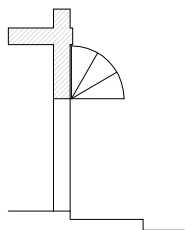
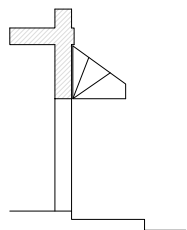




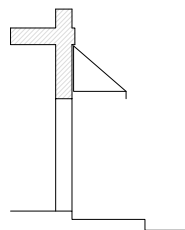
TIPOLOGIE



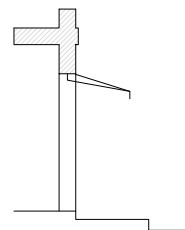
Capottina



Mezza capottina

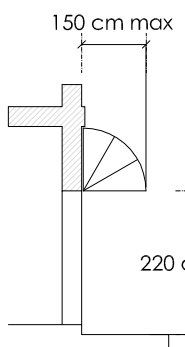


Pantalera

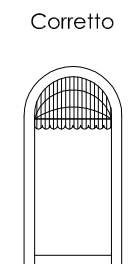
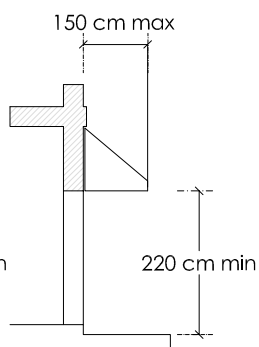


A braccio o a pantografo

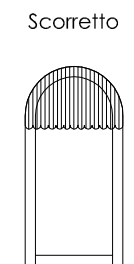
DIVIETI E LIMITAZIONI



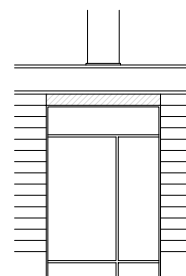
Dimensioni ingombro



Corretto

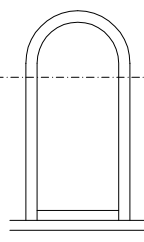
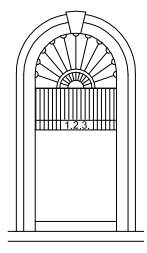
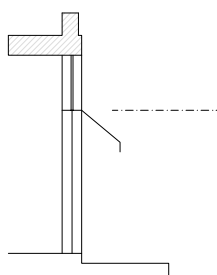


Scorretto



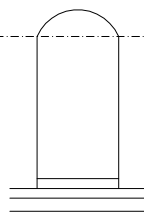
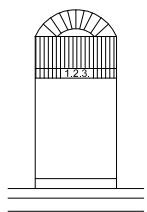
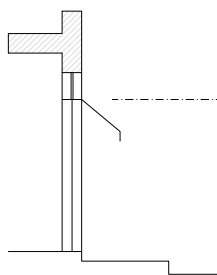
Spazio d'installazione

ESEMPI



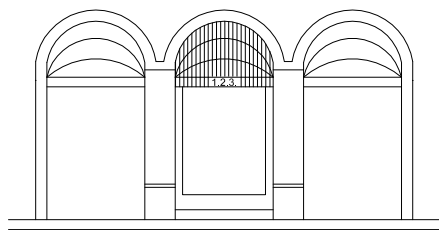
Piano di imposta lineare

Tenda a pantalera inserita in apertura ad arco, con cornice

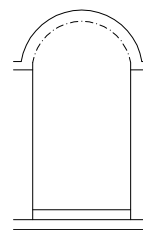


Piano di imposta lineare

Tenda a pantalera inserita in apertura ad arco ribassato, senza cornice



Tenda a capottina inserita in apertura ad arco, senza decorazione nel sopra-luce



Piano di imposta ad arco

Tipologia d'uso: COMMERCIALE

Durata: PERMANENTE

Tipo impianto: **TENDE - LIMITI DI POSIZIONE** (Art. \_\_ - comma \_\_)

Scheda 11